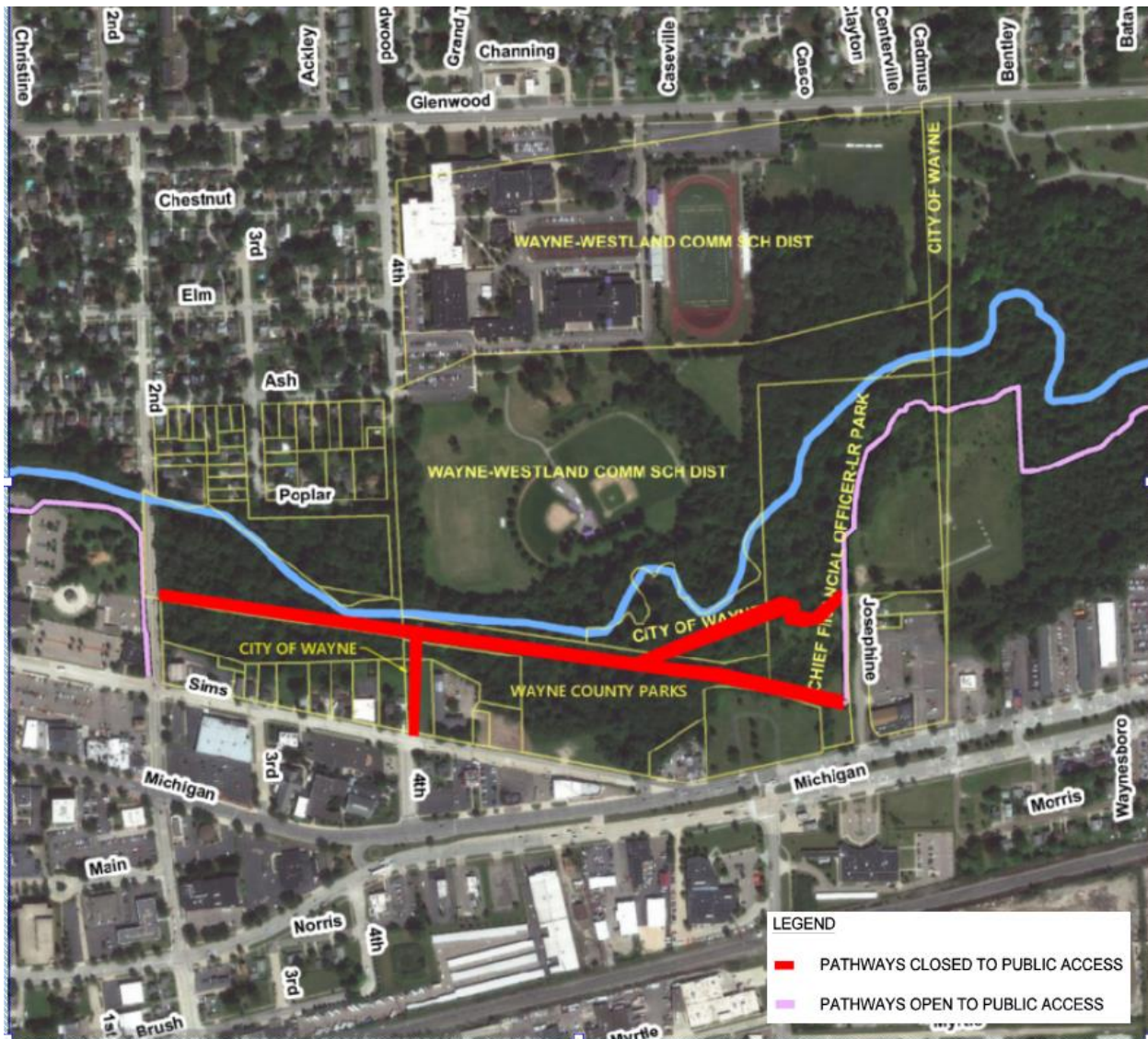


## NOTICE OF MILL TRAIL PARK PATH CLOSURES -CITY OF WAYNE



WAYNE COUNTY IS CONDUCTING A SANITARY SEWER CONSTRUCTION PROJECT ALONG 4<sup>TH</sup> STREET AND CROSSING THE LOWER ROUGE RIVER WITHIN THE CITY OF WAYNE DURING WINTER/SPRING 2023. THE CONTACTOR'S CURRENT CONSTRUCTION SCHEDULE ESTIMATES THE MILL TRAIL PARK PATH TO BE CLOSED FROM APPROXIMATELY FEBRUARY 28, 2023, THROUGH JULY 21, 2023.

TO ENSURE SAFETY OF THE PUBLIC DURING THIS TIME FRAME, THE PAVED RECREATIONAL MILL TRAIL PARK PATH ON THE SOUTH SIDE OF THE LOWER ROUGE RIVER WILL BE COMPLETELY CLOSED AND BARRICADED FROM 2<sup>ND</sup> STREET TO JOSEPHINE AS SHOWN IN RED ON THE ABOVE FIGURE. IN ADDITION, ACCESS TO THE PAVED TRAIL AT SIMS STREET, AND THE NON-PAVED TRAIL FROM JOSEPHINE TO THE PAVED TRAIL WILL ALSO BE CLOSED.

IF YOU HAVE ANY QUESTIONS REGARDING THIS PROJECT, PLEASE CONTACT WAYNE COUNTY AT [ESGHELP@WAYNECOUNTY.COM](mailto:ESGHELP@WAYNECOUNTY.COM) OR 734-326-3936.