

Friends of the **ROUGE**

2025 ANNUAL REPORT



Letter From The Executive Director

The Rouge River teaches us that real change begins long before we see it on the surface. Beneath the waterline, currents shift, roots take hold, and new pathways quietly form. In many ways, 2025 was that kind of year for Friends of the Rouge — a year of deep reflection, intentional listening, and charting a bold course for the future.

2025 was a year of challenges. Forces beyond our imagination challenged us to think differently about everything — about the way nonprofits are viewed by the general public, about the ways we show up for your Rouge River, even about the ways we show up for ourselves. There is so much good mixed in with the challenges of 2025 and I'm reminded that we've been in these situations before, and we came out the other side stronger, more resilient, and more determined to speak up for your Rouge River.

In 2025, our staff, board, partners, and community members came together to shape a new Strategic Plan that will guide our work through 2030. This plan is more than a document. It is a shared vision

On the cover: *Your monitoring team at work checking the health of your River in the lower Rouge.*

for what it means to be the primary steward of your Rouge River watershed — a commitment to restoring damaged places, protecting what is irreplaceable, and expanding access so that every person in our region can feel connected to the river that runs through their community.

Completing this plan required honesty about where we are, clarity about where we're going, and courage to imagine what's possible. It also reaffirmed something we've always known: our greatest strength is you, the people who care for this river. Volunteers, students, municipal partners, funders, families, and neighbors — each of you plays a role in shaping a healthier, more vibrant Rouge.

As you read through this year's report, you'll see that even while we were planning for the future, the work on the ground never slowed. Together, we planted thousands of native plants and trees, expanded access to trails and waterways, built new rain gardens and green infrastructure, strengthened our advocacy voice, and welcomed more people than ever into the joy of exploring and caring for your River. These stories reflect the heart of our mission: connecting people and nature in ways that endure.

Now, your River is once again reminding us to move forward with purpose. Our teams are preparing for a new season of monitoring, paddling, planting, and community celebration. And with our strategic plan as our guide, we are stepping into this next chapter with renewed focus and a deeper sense of responsibility.

Rivers don't rush toward change — they shape it steadily, persistently, with every drop. I invite you to join us in that spirit. Come paddle with us, lend a hand in a rain garden, or simply pause along the riverbank and listen for the chorus of frogs and birds returning to the watershed. Let your River remind you, as it reminds me, that connection is powerful and that every act of care ripples outward.

While 2025 brought challenges, together we rose up and faced them head on, working to create a future where clean water and natural resources are celebrated, protected, and constant. Thank you for being part of this work, for believing in the future of your River, and for helping us build a watershed where people and nature can thrive together.

With warm gratitude,

Ashley Flintoff,
Executive Director



399 advocacy and outreach events were held in 2025 to raise a collective voice for your River.



2026 Board of Directors

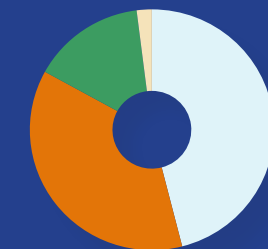
OFFICERS:

President	Myra M. Tetteh, Ph.D. Wayne County Department of Health, Human and Veterans Services
Vice President	Brandy Siedlaczek, City of Southfield
Secretary	Susan Thompson, Wayne County Department of Public Services
Treasurer	Carol Snodgrass, CPA (Retired)
Member-at-Large	Mike McNulty, ITC Holdings

DIRECTORS:

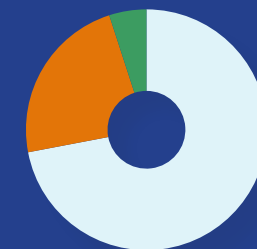
Jessica Eiland Anders Ballmer Group
Paul Draus, Ph.D. University of Michigan-Dearborn
Erma Leaphart Sierra Club Michigan Chapter (Retired)
Samra'a Luqman Concerned Residents of South Dearborn
Dave Norwood Charter Township of Canton
Gerry VanAcker Detroit Zoological Society (Retired)

2025 Financial Report



Grants 46%
 Foundations 37%
 Unrestricted 15%
 Program Services 2%

TOTAL REVENUE
 \$3,741,643



Program 72%
 Administrative 23%
 Development 5%

TOTAL EXPENSES
 \$3,397,135

Stronger Together: Collaborating for a Brighter Future

Lasting environmental change takes many hands, many perspectives, and a shared belief that healthier communities and healthier rivers are possible. In 2025, Friends of the Rouge celebrated three projects that embody this truth — each one rooted in partnership, shaped by community, and designed to endure for generations. Together, they illustrate a powerful ripple effect: when diverse partners unite around a common purpose, transformation becomes not only possible, but inevitable.

On September 19, 2025, Friends of the Rouge and a wide network of partners broke ground on Phase II of Fort Street Bridge Park

— a historic landmark in Southwest Detroit and the city’s only access point to the Rouge River Water Trail. This next phase expands green space with native plantings, adds a universally accessible boat launch, introduces a new observation

deck, and incorporates porous pavers to manage stormwater naturally.

But the true story of Fort Street Bridge Park is one of connection. The park sits at the crossroads of multiple regional trail systems — the Rouge Gateway Greenway, Downriver Linked Greenways, the Iron Belle Trail, and the Great Lakes Way — and its development mirrors that same interconnectedness. Government agencies, community groups, funders, and residents have all shaped this space, proving that when partners align their strengths, they can create a public asset that honors history, expands access, and strengthens the fabric of the community.

In Redford Township, collaboration took root — quite literally — at Jane Addams Elementary School.

In Fall 2024, Friends of the Rouge worked alongside students,



teachers, families, and volunteers to plant a mini forest of 95 trees just steps from the I-96 freeway. Designed to buffer noise and air pollution, the forest now shades the playground, slows stormwater, and brings beauty and biodiversity to a vulnerable community.

Thanks to Ford Philanthropy, the project grew in 2025 with the creation of a designated pathway through the trees. What was once an informal, muddy cut-through is now a safe, elevated walkway that protects students and invites exploration. Plant tags and interpretive features encourage environmental learning, while Ford volunteers contributed hands-on labor that deepened their connection to the school and the river.

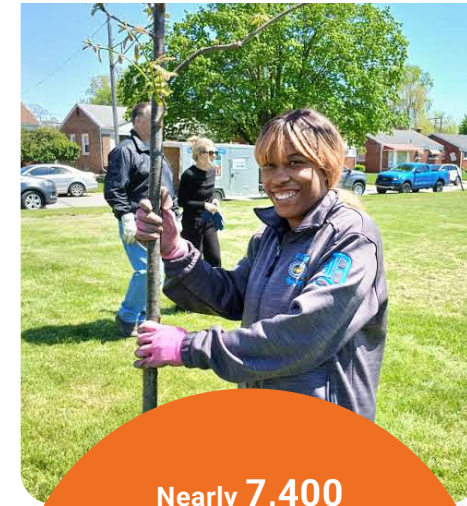
The result is more than a pathway — it is a legacy. A daily reminder that when



nonprofits, schools, families, and corporate partners work together, they can create places that nurture health, safety, curiosity, and pride for decades to come.

At the Canton Township Administration Building, another partnership blossomed — this time in the form of more than 2,000 native plants. **Friends of the Rouge, Canton Township, and the Canton Nature Society came together** to replace ornamental landscaping with deep-rooted species that support pollinators, filter stormwater, and improve water quality in the Rouge River.

What began as a landscaping update quickly became a community learning space. The gardens now offer habitat for butterflies and birds, beauty for visitors, and ongoing opportunities for public education and volunteer stewardship. Each maintenance event will bring new hands into the work of caring for the river,



Nearly **7,400** volunteers took action — enough to fill a packed high school stadium



reinforcing the idea that environmental restoration thrives when communities are invited to participate.

Across Detroit, Redford Township, and Canton, these projects tell a unified story: **the Rouge River is strengthened when people come together.** Each initiative reflects a different kind of partnership — municipal, corporate, educational, grassroots — yet all share the same



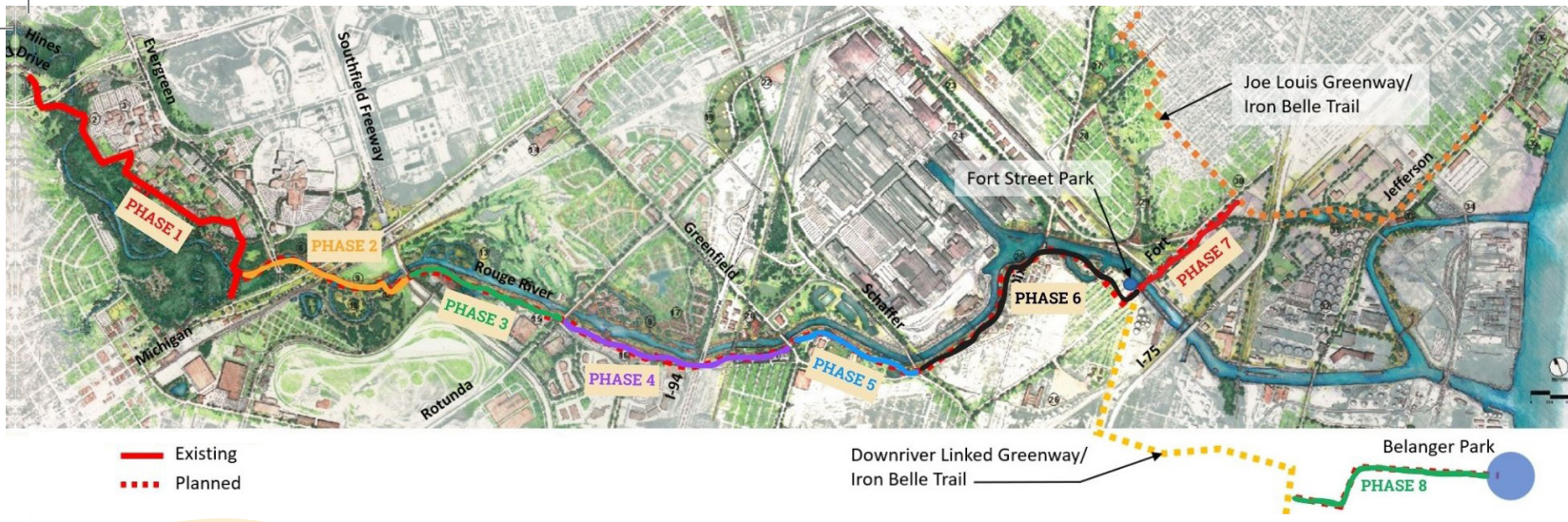
heartbeat. They demonstrate that environmental progress is not a single act, but a collective movement. One project inspires the next. One partnership opens the door to another. One restored space becomes the catalyst for a healthier watershed.

This is the ripple effect of collaboration. And it is how Friends of the Rouge, alongside our partners, continues to build a future where the river and its communities can thrive.



Opposite page: *Volunteers of all ages help replace the ornamental landscape around the Canton Township Administration building with over 2,000 deep-rooted native plants.*
Above: *Many hands make light work! FOTR and the Ford Volunteer Corp team up to install a 250ft pathway for the kids at Jane Addams Elementary in Redford.*





Where People and Nature Meet

Everyone deserves access to nature — safe places to walk, bike, explore, learn, and feel connected to the river that runs through our communities. In 2025, two powerful projects moved that vision forward in meaningful ways. From new trail connections to thriving rain gardens, each effort reflects a shared commitment to making the Rouge River watershed more accessible, more resilient, and more alive for all.

These projects remind us that connection is not just about building trails or planting gardens. It's about creating spaces where

people can breathe easier, feel safer, and experience the joy of being close to nature. And it's about ensuring that these benefits reach every neighborhood, every family, every child.

The Rouge Gateway Greenway is one of the most ambitious and transformative projects in the watershed — a vision to connect people with the river through a continuous, accessible trail system that links neighborhoods, parks, and regional greenways.

Now entering its second phase, the project is moving steadily toward construction. This next 1.9-mile segment will stretch from north of Michigan Avenue and west of Evergreen Road, extending downstream to a point just west of the Southfield

Above: Map of the Rouge Gateway Greenway highlighting the different phases of work needed to complete the trail. **Right:** Volunteers from Bosch (top) and Stantec (below) assisted with turning an ordinary patch of grass into a large rain garden at Claude Allison Park in Redford.

Freeway near the Henry Ford Museum. Once complete, it will bring thousands of residents closer to the Rouge River and to one another.

Phase 2 design was led by SmithGroup and supported by two grants from the Ralph C. Wilson Jr. Foundation. Friends of the Rouge then secured an additional \$7.1 million in funding combined from both the Wayne County Economic Development and the Wilson Foundation

to bring this phase to life. Final permitting is underway, with groundbreaking anticipated in 2026.

And the momentum doesn't stop there. With further support from the Wilson Foundation, design development for Phase 3 is now complete — extending the trail from Village Road and Southfield Road to Rotunda Drive in Allen Park.

Together, these phases form a critical link in a much larger regional vision: connecting the Rouge to the Joe Louis Greenway, Downriver Linked Greenways, the Great Lakes Way, and the Iron Belle Trail. When finished, the Rouge Gateway Greenway will not just be a trail — it will be a bridge between communities, a doorway to nature, and a powerful symbol of what's possible when partners unite around accessibility and connection.

While the Greenway expands access across miles, **the new rain garden at Claude Allison Park brings nature's benefits right into the heart of a neighborhood.**

What was once an ordinary patch of grass in the eastern part of Redford is now a thriving, 4,475-square-foot oasis of Michigan native plants — a place where pollinators buzz, water soaks safely into the ground, and families can enjoy a healthier, more beautiful park.

On June 18, 2025, Friends of the Rouge joined forces with neighbors and volunteers from BOSCH, Stantec, and Ford.

Together, **67 volunteers** dug, planted, and shaped a garden capable of holding more than **28,950 gallons** of rain water at a time (that's enough to fill roughly 600 bathtubs or two swimming pools!) — keeping up to **585,558 gallons** out of the sewer system every year. That means fewer flooded basements, cleaner streets, and cleaner water flowing into the Rouge River.

This garden is part of a much larger movement. Since 2011, Friends of the Rouge has installed **212 rain gardens** across the watershed. Each one may seem small, but together they form a powerful network of green infrastructure — filtering pollution, reducing flooding, supporting wildlife, and bringing natural beauty into everyday spaces.

Claude Allison Park is just one of seven new rain gardens installed this year, alongside projects in Southfield, Plymouth Township, and Detroit. Each one is a promise — a commitment to healthier neighborhoods, stronger ecosystems, and a future where nature is within reach for all.

From long-distance greenway connections to neighborhood rain gardens, these projects share a common purpose: **to bring people closer to nature and to one another.** They make the watershed more accessible, more resilient, and more welcoming — not just for today, but for generations to come.



Flowing Forward: Community Action for a Thriving River

Below: A family enjoys some sunshine and the middle branch of their Rouge River during the Spring Open Water Birding Paddle Trip at Nankin Lake.



Across your Rouge River watershed, communities are facing a pivotal moment. Local governments are under increasing pressure to develop land as one of the few ways to grow their tax base and maintain essential services. Yet the value of parks, open space, and natural lands—so central to quality of life—can be overlooked unless residents and advocates speak up. Too often, projects that threaten wetlands, streams, and habitat move forward quietly, unnoticed until it is too late.

In 2025, Friends of the Rouge **strengthened its role as a watchdog and advocate for the river.** Our Monitoring Team began reviewing requests submitted to the state for permits to fill or destroy wetlands and alter streams. When proposed impacts were significant, and in consultation with our Advocacy Committee, we alerted our membership, attended public hearings, and submitted formal comments. This vigilance mattered. In one case, the permit was denied outright; in others, project plans were revised to reduce harm to wetlands and waterways. FOTR also showed up at planning commission meetings across the watershed, including speaking in support of a new nature preserve in Beverly Hills—an exciting community win that will be celebrated in early 2026.

At the same time, **we are preparing for the future of watershed planning.** The Rouge River Watershed Management Plan—now thirteen years old—no longer reflects the realities of today’s development pressures or the needs of our diverse communities.

Rather than a single plan for the entire 466-square-mile watershed, the next generation of planning must focus on the unique needs of each subwatershed.

Nowhere is this more urgent than Johnson Creek, the Rouge’s only coldwater stream. Rapid development is already affecting the creek’s health, even as it remains one of the watershed’s most ecologically significant assets. In response, **FOTR was awarded an EGLE grant to complete a conservation assessment of the Johnson Creek watershed.** Launched in late 2025, this project is developing a model that evaluates proximity to streams and wetlands, adjacency to protected lands, infiltration potential, vegetation, land ownership, and more to identify the most critical parcels for preservation. An advisory committee of land conservancies, local officials, landowners, and partner organizations will guide the prioritization process, ensuring that science and community values shape the path forward.

Community action also flourished on the water and in our neighborhoods. On August 2, 2025, the **Inkster Summer Magic Paddle Trip & Health Fair brought more than 100 residents together for**

57,064 gallons of water managed by new rain gardens each time it rains, for less pollution and flooding

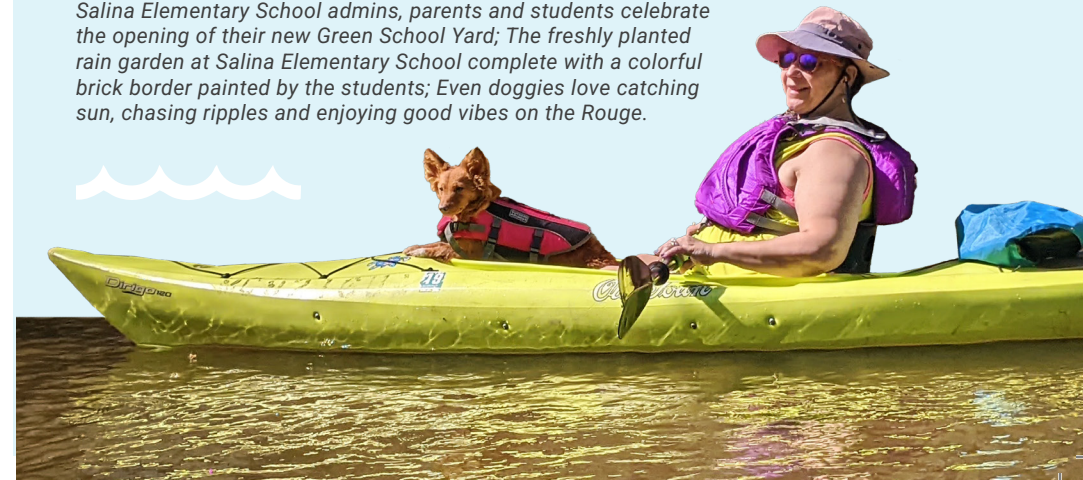
a day of connection, learning, and joy. Participants paddled from Venoy Dorsey Park to Merriman Road—many for the very first time—while the Health Fair at Colonial Park featured partners including the Wayne State Mobile Health Unit, National Kidney Foundation of Michigan, MetroParks, and FOTR’s own Dry Dock Pop-Up. Thanks to MetroParks, ten free boat rentals helped open the river to new paddlers, expanding access and building a deeper sense of belonging along the Rouge.

And on October 24, 2025, **at Salina Elementary School in Dearborn, the next generation of river stewards got their hands in the soil.** FOTR partnered with teachers, students and the city of Dearborn to install a 515 sq ft vibrant new rain garden on campus, helping the community manage stormwater while creating habitat and beauty. The rain garden will filter pollutants, provide habitat for birds and pollinators, and keep about **13,663 gallons of rain water** from flowing directly into the River annually. Students learned how rain gardens protect the river, helped plant native species, and painted colorful bricks that now form a cheerful border around the garden—a living classroom and a testament to what young people can accomplish when given the chance to care for their environment.

Together, these efforts reflect a watershed moving forward with purpose. Through advocacy, science, education, and joyful community connection, Friends of the Rouge is helping ensure that the river—and the people who depend on it—continue to thrive.



Clockwise from top left: May Gulley and Cidney Calloway of the FOTR trip crew getting ready to help paddlers launch in their boats; Salina Elementary School admins, parents and students celebrate the opening of their new Green School Yard; The freshly planted rain garden at Salina Elementary School complete with a colorful brick border painted by the students; Even doggies love catching sun, chasing ripples and enjoying good vibes on the Rouge.



Reading the River: 2025 Community Science Findings Across the Rouge

In 2025, Friends of the Rouge’s community science teams monitored 46 sites across the watershed, gathering the data that helps us understand the river’s health and track long-term changes. This fall’s Bug Hunt brought out 15 teams from universities, community groups, and local partners, who collectively documented a watershed-wide Stream Quality Index average of “Fair.” Several sites showed encouraging signs, including sensitive species like freshwater mussels and dragonflies returning to long-unsampled areas of the Main Branch. This includes finding three species of dragonflies (two of which were sensitive species) and a Michigan endangered mussel for the first time at Fordson Island. Across the Middle Branch, one site even reached “Excellent,” and many others remained stable compared to historical averages.

We continued to expand our knowledge of pearly mussels as Michigan is home to 42 species. Sensitive to changes in our waterways, mussels are the most imperiled group of animals in North America.

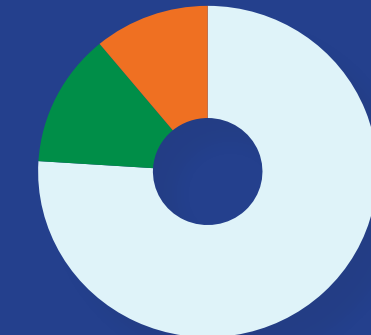
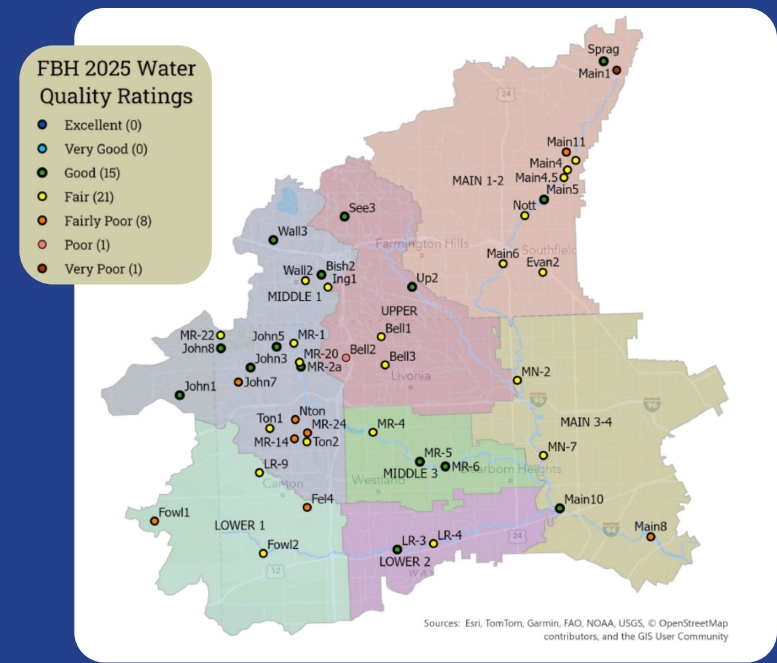
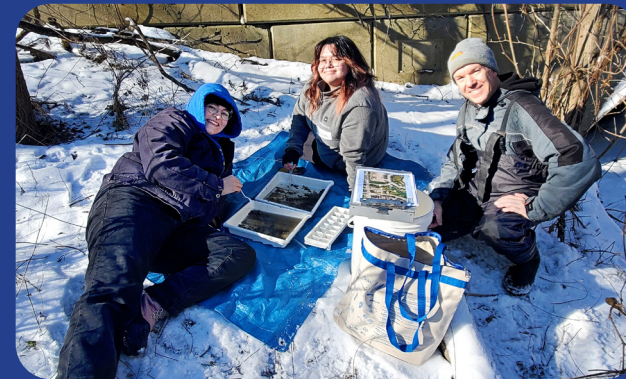
Notoriously difficult to identify, our staff and volunteers are studying to prepare ourselves for the Michigan Freshwater Mussel Identification Test. This test certifies ability to identify Michigan’s Freshwater mussels, and allows us to become experts at identifying these fragile indicators to better understand their presence and absence in the Rouge.

Our monitoring also revealed areas of concern that will guide future restoration and advocacy. Chloride levels remained elevated at many sites, with 32 locations reaching chronic or toxic thresholds – a signal that road salt continues to impact aquatic life long after winter. Long-term trend analysis showed mixed results: some subwatersheds, like Middle 3, are improving, while others, including parts of the Main and Lower branches, show declining trends. These findings underscore the importance of continued monitoring, targeted restoration, and community engagement as we work toward a healthier Rouge River.

7,064 hours of river education
- nearly **300 days** of educating our community



Below (top to bottom): Braving the January cold and snow, volunteers look for the sensitive stonefly during the annual Stonefly Search on the Rouge. Volunteers comb through river samples and foliage to search for water loving critters during the Fall Bug Hunt.



DATA TRENDS:
comparison of sites to past years

Stable 78%
Improving 11%
Declining 11%

2025 Rouge River Fish Survey: What We Learned About the River's Recovery



2,782 hours of river monitoring – almost 4 months checking the health of your River

In the summer of 2025 Friends of the Rouge conducted a comprehensive fish survey to understand the health of the Rouge River and track its long-term recovery. **The 2025 survey shows a river in transition: recovering in places, challenged in others, and deeply shaped by the collective actions of communities, partners, and volunteers.**

As part of our annual survey, our monitoring team sampled 20 sites across all four branches of the watershed, capturing and identifying 3,859 fish representing 40 species. This work provides essential data that guides restoration, habitat design, and the path toward delisting the Rouge River as an Area of Concern.

There were several encouraging trends that emerged this year. Example game species—a key indicator of improving habitat—were found at five delisting sites, including three in the Lower Branch and two in the Middle Branch. The newly opened fishway to help fish pass around the dam on the Ford Fair Lane Estate continues to

show success as Northern logperch, a sensitive species, were documented further upstream than ever before. The state-endangered reddsides dace was captured on camera by a diver in the Upper Rouge for the first time in over a decade, offering hope for the species' return. And the American brook lamprey, another sensitive species, were found at Heritage Park—currently the only known location for them in the watershed.

“**Fish are powerful indicators of watershed health. Their presence, diversity, and movement patterns reveal how well our restoration efforts are working — and where more investment is needed.**”

These findings reflect the impact of ongoing habitat restoration projects, dam removals, and improved connectivity throughout the system.

Despite these gains, the Rouge River fish community continues to face significant pressures. Through this survey, invasive round goby populations were documented expanding upstream

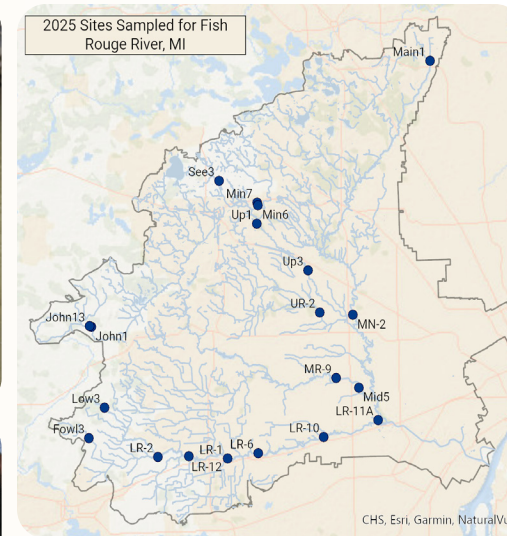
in the Main Branch at Eliza Howell Park for the first time, citing future need for invasion tracking and research through these surveys in future years.

With this need for continuous monitoring of fish population health in the Rouge, the Monitoring team focused on refining processes and building capacity within the Fish Team completing this work. This included on-the-job training of the different roles of the survey team and fish identification training and practice led by Bob Muller, Rouge fish expert.

Fish are powerful indicators of watershed health. Their presence, diversity, and movement patterns reveal how well our restoration efforts are working—and where more investment is needed. As Friends of the Rouge continues to restore habitat, remove barriers, and improve water quality, this annual survey helps ensure that every project moves us closer to a thriving, resilient Rouge River.



Left: FOTR staff show some love to a good size (especially for the Rouge) channel catfish they caught while sampling near Ford Field Park in Dearborn. **Right (counter-clockwise from top left):** Restoration GSI apprentices Leilani Russell and Adele Hawkins try their hand at collecting samples in the Rouge. Kathryn Arnold, Orin and Charlette Gelderloos Environmental Leadership Intern, learns how to sample and identify the fish of the Rouge. The FOTR monitoring team, including the team's volunteers, take a break while collecting samples and checking on the fish in the Rouge.



Funders and Supporters



3M
4545 Architecture
Alliance of Rouge Communities
Arcfield
Atwell Group, LLC
Bank of America Charitable Foundation
Bell's Brewery
Birmingham
Bosch Community Fund
Burns & McDonnell
Canton Township
Carmeuse
Central Michigan University
City of Dearborn
City of Farmington
City of Hamtramck
City of Livonia
City of Novi
City of Plymouth
City of Southfield
City of Troy
Community Foundation for
Southeast Michigan
Daimler Truck North America
Detroit Zoological Society
Downriver Delta CDC
DTE Energy
Ducks Unlimited
Elizabeth, Allan and Warren Sheldon Fund
Environmental Consulting & Technology, Inc.
Erb Family Foundation
Ford Motor Company
Gilbert Family Foundation
GM Giving

Greater Houston Community Foundation
Hubbell, Roth & Clark Inc.
Huron-Clinton Metroparks
ITC Holdings
Job Site Services
Kemp Klein Law Firm
Kiwanis Club of Colonial Plymouth
Livonia Community Foundation
M. J. Electric, LLC
Marathon Petroleum Company LP
Marine Pollution Control
Mark Allan and Associates, LLC
Mercedes-Benz Financial Services
Michigan Association of
Environmental Professionals
Michigan Department of Environment,
Great Lakes, and Energy (EGLE)
Michigan Department of
Natural Resources (MDNR)
Michigan First Foundation
Michigan State University
National Fish and Wildlife Foundation
National Wildlife Federation
Northville Township
OHM Advisors
Parkview Properties, LLC
PEA Group
Plunkett Cooney
Plymouth Pollinators
Plymouth Township
PMA Consultants
Pure Oakland Water (POW)
Redford Township
Republic Services

Robert Bosch, LLC
Rotary Club of Plymouth
Sam's Club Novi
Shinola Hotel
SmithGroup
St. Suzanne Cody Rouge
Community Resource Center
The Block Foundation
The Garden Club of Dearborn
The Nature Conservancy
The Rand Corporation
Tonquish Lodge #32,
Independent Order of Odd Fellows
University of Michigan
University of Michigan - Dearborn
Upper Long Lake Management Committee
Urban Neighborhoods Initiatives (UNI)
Utility Lines Construction Services
Village of Beverly Hills
Visteon
Washtenaw County Water Resources
Commissioner's Office
Wayne County
WM
Zervos Group



Best Friends



(8) Anonymous Best Friends
Karen Alofs
Karin Archer
Brenda Baker
William J. Bialkowski
Curt, Jill & Ann Bixel
Michelle Bogue
Lynne Brackett & Matthew Linn
Bray Gardens
Richard Brownlee
Abbey & Chris Coleman
Elayne Coleman
Veronica & Joshua Crawford
Catherine Daligga
Rachel Deodhar
Vicky Deviny
Amy Donoghue
Elizabeth Dreyer
Elizabeth Dzurka
Virginia Eaton
Lara & Kyle Edwards
Ron & Linda Edwards
Nicole J. Farley
Ms. Sara Fetsco
Bryan Garchar
Rev. Joseph Gembala
Laura Green
Kenneth & Geraldine Grunow
George Harmon
Hayley Hoffman
Ann & Tim Ivory
Robert & Heather Johncox
Deanna Kietur
Kaylee Kochanski

Kathe Koja
Ben Kramer
Ben Kronk
Jonathan Lamb
Adrian Laurenzi
Chris Lesnieski
Hillary Lewandowski
Chelsea Lonsdale
Eric & Nicky Marcot
Holly Markiecki-Bennetts
Meghan Oesterle
Leonard Ores
Lauren Osuch
Jenny & Matthew Petoskey
John Roby
Kathleen & David Rossie
Diane Rushlow
Vicki & Chuck Schroeder
Heidi Schultz
Dr. Tor Shwayder & Aimee Ergas
Mary Ellen Smith
Linda M Snow
Guy R. Stark
Dana Tedesco
Trzeciak Family
Mary & Lars Watts
Ryan Werner
Elizabeth White
Scott Williams & Erin Reas-Williams
Nicole Wilson
Christine & Keith Yancy
Anita Yeager
Daniel & Heather Yeaw

Stonefly Society



(5) Anonymous Stonefly Friends
Kathy & Michael Ableson
Jennifer Adderley
Susan Mogill-Cousin & Peter Cousin
Laraine Deutsch
Sue Dorr & Debbie Hoenscheid
The Eders
Anne & Albert Ford
Alan & Ann Frank
Dr. Orin & Charlette Gelderloos
Jeffrey & Marilyn Gilbert
William Eisenman & Susan Guenther
George Harmon
Bonnie & Gary Hollander
Ann & Tim Ivory
Robert & Heather Johncox
Barton & Judy Lessin
Elizabeth Lurie
Thomas Maza & Susan Rice
Marie & Darren McCormick
Aaron Mondry & Susannah Goodman
James Murray
Sally Petrella & Paul Stark
Jerry Ring
William Secrest & Misty Callies
Patricia & Bob Shaw
Sam Shopinski & Lisa King
Kenneth & Sharon Snodgrass
Carol Snodgrass
Terry & Jeff Snyder
Jack Snyder
Paula Trilety & John C. Barker
Gerry & Sharon VanAcker
The Zikowski Family

2026 STAFF

Ashley Flintoff, Executive Director
Andrew Berg, Development Director
Erin Cassady, Grants Administrator
Matt Connors, Restoration Field Coordinator
Sam Davis, Monitoring Coordinator
Brian Devlin, Restoration Landscape Architect and Mentor
Lauren Eaton, Monitoring Manager
Allison Eder, Operations Coordinator
May Gulley, Trails Assistant
Karen Hanna, Operations Director
Adele Hawkins, GSI Technician
Herman Jenkins, Trails Manager
Jacqueline Kristofik, Restoration Coordinator
Vishnu Kusam, Landscape Designer
Elizabeth Lewandowski, Development Coordinator
Marion Martyres, Volunteer Coordinator
Sally Petrella, Watershed Ecologist
Cyndi Ross, Restoration Manager
Leilani Russell, GSI Technician
Susan Shell, Restoration Field Coordinator
Nicole Wilson, Development Coordinator
Erica Zador, Landscape Designer

Friends
of
the **ROUGE**

650 Church Street, Suite 209 | Plymouth, Michigan 48170

734.927.4900 | www.therouge.org



FriendsOfTheRouge



RougeFriends



RougeFriends

This report was printed on recycled paper 